



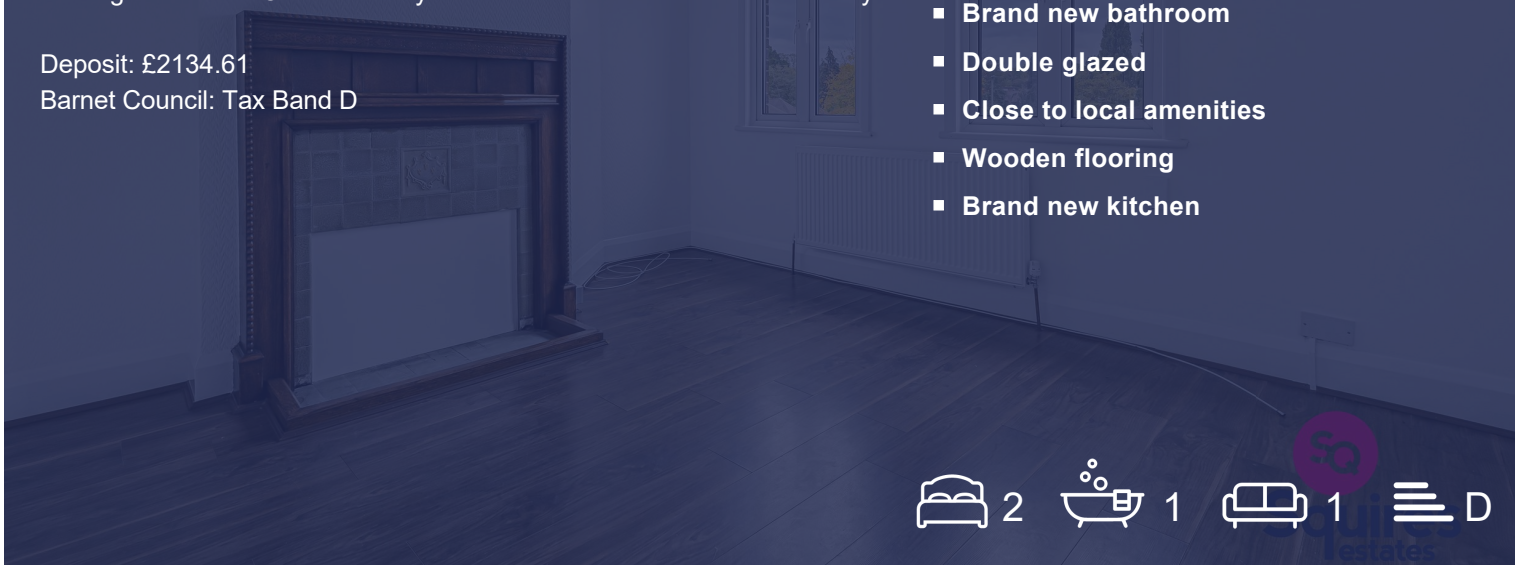
## Sussex Ring, Woodside Park, N12 7HY

£1,750 Per Week -

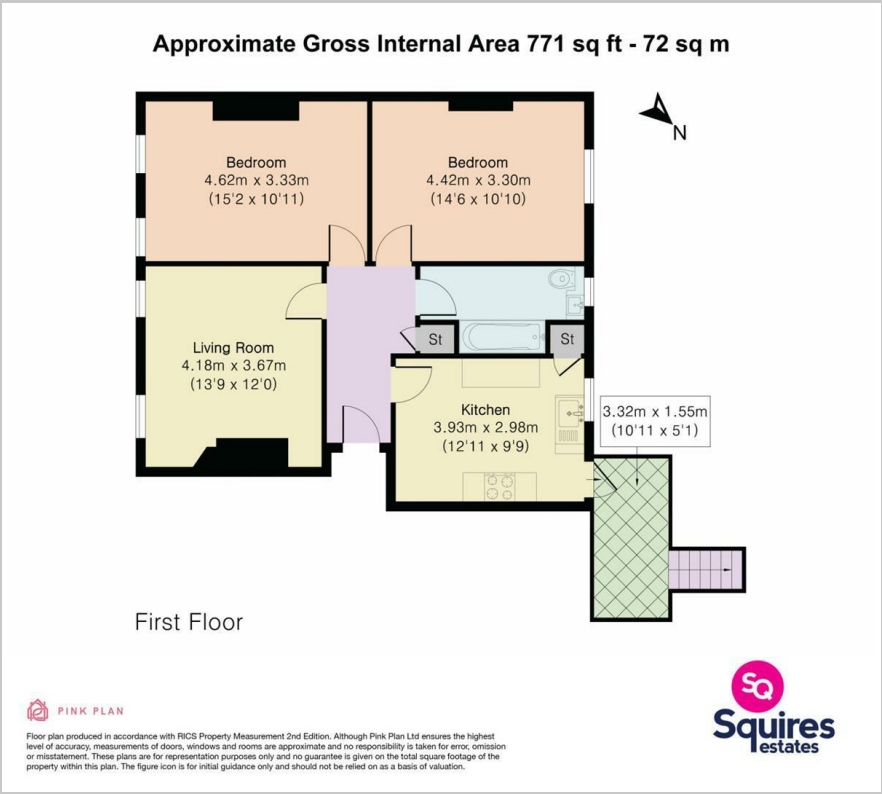
An extremely spacious two double bedroom flat located in Woodside Park. Brand new large kitchen. Brand new bathroom. New wooden flooring throughout. Redecorated throughout. Double glazed. Gas central heating. First floor. Offered mostly unfurnished and available immediately

Deposit: £2134.61  
Barnet Council: Tax Band D

- Two double bedrooms
- Council tax band D
- Unfurnished
- Brand new bathroom
- Double glazed
- Close to local amenities
- Wooden flooring
- Brand new kitchen



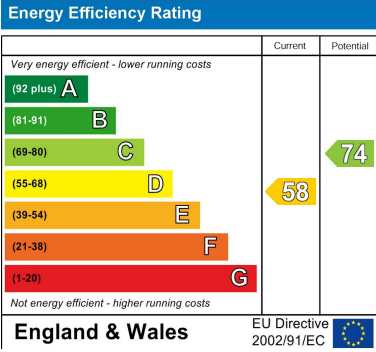
Floor Plan



Area Map



Energy Efficiency Graph



These particulars, whilst believed to be accurate are set out as a general outline only for guidance and do not constitute any part of an offer or contract. Intending purchasers should not rely on them as statements of representation of fact, but must satisfy themselves by inspection or otherwise as to their accuracy. No person in this firms employment has the authority to make or give any representation or warranty in respect of the property.